

Roll No:

Registration No:

Name:

Date: **06-Jan-2019 -2nd Shift**

Examination: **Online Examination - SI**

Section 1 - Online Examination

Question No.1

1.00

Bookmark

Who among the following was a famous slave of Allauddin Khilji?

- (A) Uloom Khan - (Alternative 3)
- (B) Amir Khusro - (Alternative 2)
- (C) **Malik Kafoor - (Alternative 1)**
- (D) Zafar Khan - (Alternative 4)

Question No.2

1.00

Bookmark

Which of these link covers connecting to the Vindhya and Satpuda ranges?

- (A) Rajpipla Range - (Alternative 3)
- (B) Mahadev Ridge - (Alternative 4)
- (C) **Mackle Ridge - (Alternative 1)**
- (D) Kaimur Mountains - (Alternative 2)

Question No.3

1.00

Bookmark

The main objective of the Economic Responsibility and Budget Management (FRBM) Act (FRBM) is _____.

- (A) Improvement in law sector - (Alternative 4)
- (B) **Economic Aggregation - (Alternative 1)**
- (C) Tax devaluation for states - (Alternative 3)
- (D) Increasing Government spending - (Alternative 2)

Question No.4

1.00

Bookmark

The Kilimanjaro mountain range is in which continent?

- (A) Australia - (Alternative 4)
- (B) **Africa - (Alternative 3)**
- (C) Asia - (Alternative 1)
- (D) Europe - (Alternative 2)

Question No.5

1.00

Bookmark

The United Nations Development Program released their first human development report in _____.

- (A) **1990 - (Optional 1)**
- (B) 1993 - (Alternative 4)
- (C) 1992 - (Alternative 3)
- (D) 1991 - (Alternative 2)

Question No.6

1.00

Bookmark

The semi-arid tropical savanna region of Africa is known as _____.

- (A) Sahara - (Alternative 1)
- (B) Katanga Plateau - (Alternative 4)
- (C) **Sahel - (Alternative 3)**
- (D) Whales - (Alternative 2)

Question No.7

1.00

Bookmark

What is the provision of emergency for which Indian Constitution?

- (A) Part-XIV (fourteen) - (Optional 1)
- (B) Part XII (Thirteen) - (Alternative 2)
- (C) Part XV (Fifteen) - (Optional 4)
- (D) **Part XVIII (Eighteen) - (Optional 3)**

Question No.8

1.00

Bookmark

What is the concept of the Supreme Court's counseling jurisdiction?

- (A) Japanese - (Alternative 4)
- (B) **Canadian - (Alternative 2)**
- (C) British - (Alternative 3)
- (D) Australian - (Alternative 1)

Question No.9

1.00

Bookmark

Lavani is a famous folk dance of _____.

- (A) Rajasthan - (Alternative 1)
- (B) **Maharashtra - (Alternative 2)**
- (C) Kerala - (Alternative 4)
- (D) Karnataka - (Alternative 3)

Question No.10

1.00

Bookmark

The process of copying the genetic information on the RNA from one of the DNA is called _____.

- (A) **Transcription - (Optional 2)**
- (B) Transcopying - (Optional 3)
- (C) Transformation - (Alternative 4)
- (D) Translation - (Alternative 1)

Question No.11

1.00

Bookmark

Who is appointed by the Supreme Court of India?

- (A) Union Home Minister - (Alternative 3)
- (B) Prime - (Alternative 2)
- (C) **President - (Alternative 1)**
- (D) Parliamentary Committee - (Alternative 4)

Question No.12

1.00

Bookmark

Who separates the Meghalaya plateau from Malda Khand?

- (A) Purvanchal - (Alternative 3)
- (B) **Indian Peninsula Plateau - (Alternative 2)**
- (C) Himalaya - (Alternative 1)
- (D) Ganga - (Alternative 4)

Question no.13

1.00

Bookmark

Which game is associated with 'dribbling' skills?

- (A) **Hockey - (Alternative 3)**
- (B) Bridge - (Alternative 4)
- (C) Chess - (Alternative 2)
- (D) Kart Racing - (Alternative 1)

Question No.14

1.00

Bookmark

What kind of recruitment comes when the sun, moon, and earth are aligned?

- (A) Mixed Recruitment - (Alternative 2)
- (B) **Spacing Recruitment - (Alternative 3)**
- (C) Daily recruitment - (Alternative 1)
- (D) Elevation - (Alternative 4)

Question No.15

1.00

Bookmark

What is the name of the disorder caused by the presence of an extra chromosome 21?

- (A) Klinefelters syndrome - (Alternative 1)
- (B) **Downs Syndrome - (Alternative 4)**
- (C) Darwin's syndrome - (Alternative 3)
- (D) Turners Syndrome - (Alternative 2)

Question No.16

1.00

Bookmark

Summer Olympics 2018 In which country?

- (A) Japan - (Alternative 4)
- (B) China - (Alternative 2)
- (C) **Argentina - (Alternative 3)**
- (D) Peru - (Alternative 1)

Question no.17

1.00

Bookmark

Pictures of Ajitha are _____ common themes.

- (A) **Buddhist - (Alternative 4)**
- (B) Shaiv - (Alternative 3)
- (C) Vaishnav - (Alternative 2)
- (D) Jain - (Alternative 1)

Question No.18

1.00

Bookmark

What is the uneven distribution of light intensity due to the overwhelming power of two waves?

- (A) Diffraction - (Optional 1)
- (B) Coherence - (Alternative 4)
- (C) Upping - (Alternative 2)
- (D) **Interference - (Optional 3)**

Question No.19

1.00

Bookmark

The concept of social, economic and political justice has been taken from which revolution?

- (A) Japanese Revolution - (Alternative 4)
- (B) American Revolution - (Alternative 2)
- (C) French Revolution - (Alternative 1)
- (D) **Russian Revolution - (Alternative 3)**

Question no.20

1.00

Bookmark

Who is considered the last signativist of the Indian Constitution?

- (A) **Supreme Court - (Alternative 4)**
- (B) Parliament - (Alternative 2)
- (C) Chief Minister - (Alternative 1)
- (D) Prime - (Alternative 3)

Question no.21

1.00

Bookmark

Which of the following is the tallest plateau in the world?

- (A) Deccan Plateau - (Alternative 3)
- (B) **Tibetan Plateau - (Alternative 2)**
- (C) Columbia Plateau - (Alternative 1)
- (D) Katanga Plateau - (Alternative 4)

Question no.22

1.00

Bookmark

The rate at which the bank lends to banks is called _____.

- (A) Open Market Rate - (Optional 4)
- (B) **Bank Rate - (Optional 2)**
- (C) Reverse Repo Rate - (Optional 3)
- (D) Repo Rate - (Optional 1)

Question no.23

1.00

Bookmark

The dipole sludge per unit rectangle is called _____.

- (A) Paraguay - (Alternative 4)
- (B) Electrical Dipole - (Alternative 3)
- (C) Bipolar Aggression - (Alternative 1)
- (D) **Polarization - (Alternative 2)**

Question No.24

1.00

Bookmark

What is the location of pollen grains in the females in feminine intersections?

- (A) **Pollination - (Alternative 4)**
- (B) Bilateral - (Alternative 3)
- (C) Embryogeny - (Alternative 1)
- (D) Function - (Alternative 2)

Question no.25

1.00

Bookmark

Which one of the following is not related to Kho-Kho game skills?

- (A) Foul - (Alternative 4)
- (B) Pol Dive - (Alternative 1)
- (C) Trapping - (Alternative 3)
- (D) **Dribble - (Alternative 2)**

Question No.26

1.00

Bookmark

Who among these was a famous traveler from Venice?

- (A) **Marco Polo - (Alternative 2)**
- (B) François Bernier - (Alternative 3)
- (C) Duraute Barbosa - (Alternative 4)
- (D) Niketeen - (Alternative 1)

Question no.27

1.00

Bookmark

In Milind Panhho, who gave the answer to questions related to Buddhism in Milind?

- (A) **Nageshwar - (Alternative 1)**
- (B) Buddhaghosa - (Alternative 4)
- (C) Vasubandhu - (Alternative 2)
- (D) Bodhidharma - (Alternative 3)

Question no.28

1.00

Bookmark

_____ The country has made national planning for the first time.

- (A) India - (Alternative 3)
- (B) **Russia - (Alternative 2)**
- (C) China - (Alternative 4)
- (D) America - (Alternative 1)

Question no.29

1.00

Bookmark

The inferior valley between the junior Himalayas and Shivalik is also called _____ in the west.

- (A) Triangle - (Alternative 1)
- (B) **Duns - (Alternative 3)**
- (C) Caravelas - (Alternative 2)
- (D) Areas - (Alternative 4)

Question no.30

1.00

Bookmark

The process of producing electric current through the variable magnetic field is called _____.

- (A) Electrification - (Alternative 4)
- (B) Patience - (Alternative 3)
- (C) **Electromagnetic Induction - (Alternative 1)**
- (D) Parabolic - (Alternative 2)

Question no.31

1.00

Bookmark

Which states are included in the Mahadai Water Disputes Tribunal?

- (A) Odisha, Telangana and Andhra Pradesh - (Alternative 4)
- (B) Goa, Gujarat and Maharashtra - (Alternative 2)
- (C) Gujarat, Rajasthan and Madhya Pradesh - (Alternative 3)
- (D) **Goa, Karnataka and Maharashtra - (Alternative 1)**

Question no.32

1.00

Bookmark

Asia and North America.

- (A) Caspian Sea - (Alternative 3)
- (B) Suez Canal - (Alternative 2)
- (C) Black Sea - (Alternative 1)
- (D) **Bering Strait - (Alternative 4)**

Question no.33

1.00

Bookmark

In which of the yagna, the helpless Bhujangasan exhibits?

- (A) Lotus - (Alternative 2)
- (B) **Cobra - (Alternative 1)**
- (C) Cat - (Alternative 4)
- (D) Tree - (Alternative 3)

Question no.34

1.00

Bookmark

The new alluvial lands formed in the river's path are called _____.

- (A) **Khaddar - (Alternative 4)**
- (B) Lowland - (Alternative 2)
- (C) Hobber - (Alternative 1)
- (D) Bhangar - (Alternative 3)

Question no.35

1.00

Bookmark

What formula is used to find a very simple ratio of the number of atoms in a compound?

- (A) Chemical formula - (Alternative 2)
- (B) **Formal formula - (Optional 4)**
- (C) Structural Formula - (Optional 3)
- (D) Molecular Formula - (Alternative 1)

Question No.36

1.00

Bookmark

Who is the caretaker President of India in the absence of the President?

- (A) Speaker of Lok Sabha - (Alternative 3)
- (B) The most senior member of the Rajya Sabha - (Alternative 4)
- (C) Chief Justice of India - (Alternative 1)
- (D) **Vice President of India - (Alternative 2)**

Question no.37

1.00

Bookmark

Which of the following is a famous science fiction book?

- (A) Sushruta Samhita - (Alternative 1)
- (B) **Surya Theory - (Alternative 3)**
- (C) Charak Code - (Alternative 4)
- (D) Panchatantra - (Alternative 2)

Question No.38

1.00

Bookmark

Indian Constitution prohibits the employment of children under _____ years of age.

- (A) **14 - (Optional 3)**
- (B) 7 - (Optional 1)
- (C) 16 - (Optional 2)
- (D) 18 - (Optional 4)

Question No.39

1.00

Bookmark

Who among the following has plundered and destroyed other temples 17 times along with the famous Somnath Temple in their attacks?

- (A) Qutubuddin Aibak - (Alternative 4)
- (B) **Mahmoud Ghazni - (Alternative 3)**
- (C) Timurlong - (Alternative 2)
- (D) Mohammed Ghori - (Alternative 1)

Question No.40

1.00

Bookmark

The famous Borobudur Temple is dedicated to _____.

- (A) Strength - (Optional 3)
- (B) Vishnu - (Alternative 2)
- (C) Shiva - (Alternative 1)
- (D) **Buddha - (Alternative 4)**

Question No.41

1.00

Bookmark

Which functionality is called as the percentage of total space filled with particles?

- (A) **Packing Functionality - (Optional 2)**
- (B) Structural Functionality - (Optional 4)
- (C) Laty Functionality - (Optional 3)
- (D) Solid Functionality - (Optional 1)

Question No.42

1.00

Bookmark

The full name of AKFI's regulatory board is _____.

- (A) All India Kung Fu Federation - (Alternative 4)
- (B) **Amateurs Kabaddi Federation of India - (Alternative 2)**
- (C) Amateurs Karate Two Federation of India - (Alternative 1)
- (D) Advanced Kho-Kho Federation of India - (Alternative 3)

Question No.43

1.00

Bookmark

Which of the following is not a UNESCO World Heritage Site in Delhi?

- (A) **Elephanta Cavity - (Alternative 3)**
- (B) Humayun's Tomb - (Alternative 2)
- (C) Qutub Minar - (Alternative 4)
- (D) Red Fort - (Alternative 1)

Question No.44

1.00

Bookmark

Which method is used to convert units of one system into another system?

- (A) Legal Marking - (Optional 1)
- (B) Accuracy - (Optional 4)
- (C) **Quantification Analysis - (Alternative 3)**
- (D) Precision - (Optional 2)

Question No.45

1.00

Bookmark

Without a bill sanctioning a bill by the President and not returning it, it is called _____, to be kept pending for an indefinite period of time.

- (A) Suspicious Vito - (Alternative 1)
- (B) Absolute Vitto - (Alternative 3)
- (C) Qualified Vito - (Alternative 2)
- (D) **Pocket Vito - (Alternative 4)**

Question no.46

1.00

Bookmark

The total number of members in the Rajya Sabha is _____.

- (A) 242 - (Alternative 4)
- (B) 245 - (Alternative 2)
- (C) **250 - (Optional 1)**
- (D) 240 - (Alternative 3)

Question no.47

1.00

Bookmark

Which of the following regions have the highest percentage of forestry?

- (A) Nagaland - (Alternative 3)
- (B) **Mizoram - (Alternative 1)**
- (C) Kerala - (Alternative 4)
- (D) Manipur - (Alternative 2)

Question No.48

1.00

Bookmark

In 1945 the people's plan was prepared by _____.

- (A) Jaiprakash Narayan - (Alternative 1)
(B) **M.N. Roy - (Alternative 3)**
(C) J.R.D. Tata - (Alternative 2)
(D) Jawaharlal Nehru - (Alternative 4)

Question No.49

1.00

Bookmark

In which country did the 2018 Commonwealth Games tournament be held?

- (A) Singapore - (Alternative 4)
(B) **Australia - (Alternative 2)**
(C) Kenya - (Alternative 3)
(D) Tanzania - (Alternative 1)

Question No.50

1.00

Bookmark

Which of these famous cities was formed by Firoz Shah Tughlaq?

- (A) Mahmudabad - (Alternative 3)
(B) Bidar - (Alternative 2)
(C) Agra - (Alternative 1)
(D) **Hisar - (Alternative 4)**

Question no.51

1.00

Bookmark

Four of the five given below are the same in a particular way and hence form a group. Which of these does not fit into that group?

Happy, happy, happy, happy, sad

- (A) **Sadness - (Alternative 3)**
(B) Happy - (Optional 1)
(C) Happy - (Optional 2)
(D) Harsh - (Alternative 4)

Question no.52

1.00

Bookmark

Four of the five given below are the same in a particular way and hence form a group. Which of these does not fit into that group?

J, N, R, H, G

- (A) N - (Alternative 3)
(B) **G - (Alternative 4)**
(C) H - (Alternative 2)
(D) J - (Alternative 1)

Question no.53

1.00

Bookmark

What is the next number in this series?

29, 30, 34, 43, 59,?

- (A) **84 - (Optional 3)**

- (B) 85 - (Alternative 2)
- (C) 89 - (Optional 1)
- (D) 90 - (Alternative 4)

Question No.54

1.00

Bookmark

In a typical code language, if SHADE is written as JUZGF, how will GLOAM be written?

- (A) MINOC - (Optional 1)
- (B) NIMOC - (Optional 2)
- (C) NIQOC - (Optional 3)
- (D) **NINOC - (Optional 4)**

Question no.55

1.00

Bookmark

Read the information given and answer the following questions.

Eight persons A, B, C, D, E, F, G and H are sitting in the direction of the round table (not sure if they are in the same order) that they have the same distance between each. Of these, there are 5 men and 3 women. Two women are not sitting together anywhere

- i) A is a man and he is sitting in front of G
- ii) H and B are neighbors
- iii) C is a woman and B is third place on her side.
- iv) A is not a neighbor of C or B.
- v) There is one between G and B.
- vi) D is not close to A, but it is sitting in front of F.

How many people are sitting in the G and B, when starting to measure from the right of G?

- (A) 5 - (Optional 2)
- (B) **1 - (Optional 1)**
- (C) 4 - (Optional 3)
- (D) 3 - (Optional 4)

Question no.56

1.00

Bookmark

In a particular code language, if SPIRIT is written as HKRIRG in code format, how will MISERY be written?

- (A) NRIFSZ - (Alternative 4)
- (B) NRHVBI - (Optional 1)
- (C) NJTVSZ - (Alternative 2)
- (D) **NRHVIB - (Optional 3)**

Question no.57

1.00

Bookmark

Select the option that will replace the question mark according to the same logic set in the first pair.

1053: 18 :: 2354: ??

- (A) 20 - (Optional 1)
- (B) 24 - (Optional 3)
- (C) 22 - (Optional 2)
- (D) **28 - (Alternative 4)**

Question no.58

1.00

Bookmark

In this question, three statements related to each other, followed by three conclusions, i, ii and iii are given. Assuming that the statement is true, find out which conclusion is absolutely correct.

Statement: $A \geq B > C$; $C = I < T < E$; $T > L \geq G$

Conclusion:

i) $C > G$

ii) $A >$

iii) $B > T$

- (A) Only ii is true - (Alternative 4)
(B) Only ii and iii are true - (optional 3)
(C) Only i and ii are true - (alternative 2)
(D) All are correct - (Optional 1)

Question no.59

1.00

Bookmark

There is a hint in this question and a statement is given later. Carefully read the excerpts provided and determine the statement based on that episode. The

current Australian team has lost three of their last five Test series. They lost their last two Test series, one of which was against Pakistan, which is not considered to be a strong team now. Australia's two best batsman, Steve Smith and David Warner are currently suspended and their absence has weakened the Australian team.

There is a lot of dissatisfaction and introspection about how their national team plays in Australia, how they show aggression on the field, how they do not show respect to the team against them, and neglecting the media at the most, and focusing only on winning only, the discussion on the future of the game is ongoing. There are. Australian cricket never reached such a low level. This is the best opportunity to knock them into their own house. In other words, if this India could not beat Australia in Australia in this series, then it would prove that the campaign around this team is only the same: the propaganda.

Statement: India has a good chance of defeating Australia.

Choose the right one from the next option

A - The statement is completely true.

B-statement is most true.

There is no definitive definition based on C-statement.

D-statement is completely false.

- (A) B - (Alternative 2)
(B) C - (Alternative 3)
(C) D - (Alternative 4)
(D) A - (Alternative 1)

Question No.60

1.00

Bookmark

In this question, the statement has shown the relationship of various elements. Statement after the two findings:

Statement: $A \leq B < C \geq D < E = F < G$

conclusions:

i) $A = D$

ii) $A < D$

Select one of the following options

(A) is the i logical only conclusion

- (B) only conclusion ii is logical
(c) i or ii is either logical
(d) i or ii none of the rational
(E) i and ii are both logical.
(A) B - (Alternative 2)
(B) **D - (Alternative 4)**
(C) A - (Alternative 1)
(D) C - (Alternative 3)

Question No.61

1.00

Bookmark

Four of the five given below are the same in a particular way and hence form a group. Which of these does not fit into that group?

LNP, TVX, USQ, OQS, HJL

- (A) HJL - (Alternative 2)
(B) LNP - (Alternative 4)
(C) **USQ - (Alternative 3)**
(D) TVX - (Alternative 1)

Question No.62

1.00

Bookmark

In this question, three statements and then three conclusions are given. Assuming the statement is the whole truth, then decide together with the findings that decide which conclusions are undoubtedly logical based on the information given in the statement.

Statement: Some lines are columns. There are some column layouts. There are all layers of wood.

Conclusion:

- i) Some columns are wood.
ii) There are some lines of wood.
iii) There is no line of wood.
(A) Only ii) and iii) are logical - (Optional 3)
(B) ii) or iii) One of these is logical - (Optional 1)
(C) **Only i), and ii) one or iii) are logical. - (Optional 4)**
(D) Only i) and ii) are logical - (alternative 2)

Question No.63

1.00

Bookmark

Read the information given and answer the following questions.

Eight persons A, B, C, D, E, F, G and H are sitting in the direction of the round table (not sure if they are in the same order) that they have the same distance between each. Of these, there are 5 men and 3 women. Two women are not sitting together anywhere

- i) A is a man and he is sitting in front of G
ii) H and B are neighbors
iii) C is a woman and B is third place on her side.
iv) A is not a neighbor of C or B.
v) There is one between G and B.
vi) D is not close to A, but it is sitting in front of F.

Which of the following statements is true about the seating?

- (A) **F or H is a woman. - (Optional 3)**
(B) C is a man sitting in front of H. - (Optional 2)
(C) E and A are the workshops. - (Optional 4)
(D) The groups are women of C, D and E. - (Optional 1)

Question No.64

1.00

Bookmark

Select the option that will replace the question mark according to the same logic set in the first pair.

Bowl: Soup :: Cup: ??

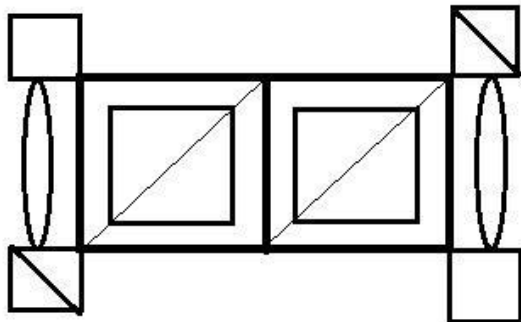
- (A) Spoon - (Alternative 1)
- (B) Taste - (Optional 4)
- (C) **Coffee - (Alternative 2)**
- (D) Dish - (Alternative 3)

Question No.65

1.00

Bookmark

How many compass strokes can be made from given figure?



- (A) 10 - (Optional 3)
- (B) 8 - (Optional 2)
- (C) 16 - (Optional 4)
- (D) **12 - (Optional 1)**

Question no.66

1.00

Bookmark

In this question, a statement is given and there are two conclusions similar to that of i and ii. It is to be assumed that you have all the truth in the statement given, and then both the conclusions are to be taken concurrently and to determine which conclusions are reasonable without any reasonable conclusions from the information given in the statement.

Statement: Every Saturday is a holiday. Today is the holiday.

Conclusion:

- i) Today is Saturday.
- ii) Today is not Saturday

Choose the correct one from the next options

- (A) Only conclusions are true.
 - (B) Only conclusions ii is true.
 - (C) i or ii is true.
 - (D) None of the i or ii is true.
 - (E) i and ii are both true.
- (A) E - (Alternative 4)
 - (B) **C - (Alternative 3)**
 - (C) B - (Alternative 2)
 - (D) A - (Alternative 1)

Question No.67

1.00

Bookmark

Select the option that will replace the question mark according to the same logic set in the first pair.

W: L :: T: ??

- (A) J - (Alternative 1)
- (B) Z - (Alternative 2)
- (C) A - (Alternative 4)
- (D) I - (Optional 3)

Question No.68

1.00

Bookmark

Read the information given and answer the following questions.

Eight persons A, B, C, D, E, F, G and H are sitting in the direction of the round table (not sure if they are in the same order) that they have the same distance between each. Of these, there are 5 men and 3 women. Two women are not sitting together anywhere

- i) A is a man and he is sitting in front of G
- ii) H and B are neighbors
- iii) C is a woman and B is third place on her side.
- iv) A is not a neighbor of C or B.
- v) There is one between G and B.
- vi) D is not close to A, but it is sitting in front of F.

Which of these couples is women?

- (A) CF - (Optional 1)
- (B) FH - (Optional 4)
- (C) DH - (Alternative 2)
- (D) CD - (Optional 3)

Question No.69

1.00

Bookmark

In this question, there are two statements and two conclusions i and ii. Assuming the statement is the whole truth, then decide both conclusions together, and decide which conclusions are undoubtedly logical based on the information given in the statement.

Statement: All children are sons. All the boys are men.

Conclusion:

- i. All the boys are male.
- ii. There are some male sons.

Choose the correct option from the next

- (A) only the conclusion is true.
- (B) Only conclusions ii is true.
- (A) Conclusion i or ii is true.
- (D) Both i or ii are not true.
- (E) i and ii are both true.
- (A) E - (Alternative 4)
- (B) A - (Alternative 1)
- (C) C - (Alternative 3)
- (D) B - (Alternative 2)

Question No.70

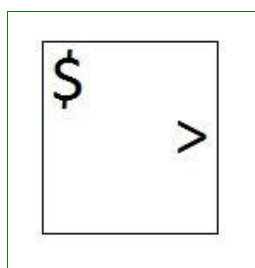
1.00

Bookmark

Which one of the following options for a given series is a figure coming up in it?

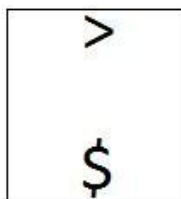
>	>	\$	\$	\$
\$	\$	>	>	>

(A)



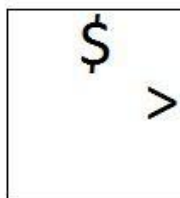
- (Optional 2)

(B)



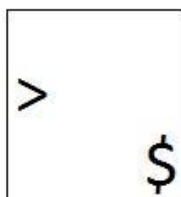
- (Optional 1)

(C)



- (Optional 4)

(D)



- (Optional 3)

Question No.71

1.00

Bookmark

There is a hint in this question and a statement is given later. Carefully read the excerpts provided and determine the statement based on that episode. The

current Australian team has lost three of their last five Test series. They lost their last two Test series, one of which was against Pakistan, which is not considered to be a strong team now. Australia's two best batsman, Steve Smith and David Warner are currently suspended and their absence has weakened the Australian team.

There is a lot of dissatisfaction and introspection about how their national team plays in Australia, how they show aggression on the field, how they do not show respect to the team against them, and neglecting the media at the most, and focusing only on winning only, the discussion on the future of the game is ongoing. There are. Australian cricket never reached such a low level. This is the best opportunity to knock them into their own house. In other words, if this India could not beat Australia in Australia in this series, then it would prove that the campaign around this team is only the same: the propaganda.

Legislation: The current Australian team won two of the last five Tests they played.

Choose the right one from the next option

A - The statement is completely true.

B-statement is most true.

There is no definitive definition based on C-statement.

D-statement is completely false.

(A) B - (Alternative 2)

(B) C - (Alternative 3)

(C) D - (Alternative 4)

(D) A - (Alternative 1)

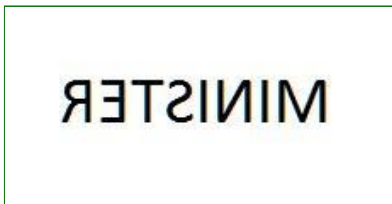
Question No.72

1.00

Bookmark


If you put a mirror on the shaded line, which of the following options would be the right image of the given figure?



(A)  - (Optional 3)

(B)  - (Optional 1)

(C)  - (Optional 2)

(D)  - (Optional 4)

Question no.73

1.00

Bookmark

Select the option that will replace the question mark according to the same logic set in the first pair.

Needle: Tailor :: Pen: ??

(A) Poet - (Alternative 2)

- (B) Paper - (Alternative 4)
- (C) Ink - (Alternative 3)
- (D) Write - (Optional 1)

Question No.74

1.00

Bookmark

Junkie said, "Jimmy is the father of a son of my father's wife." Jimmy is a dog?

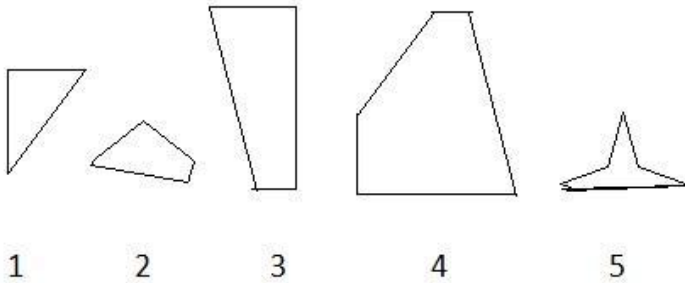
- (A) Juno's father - (Alternative 4)
- (B) Juno's grandfather - (Alternative 2)
- (C) Juno's Maternal - (Alternative 1)
- (D) Juno's maternal - (Alternative 3)

Question No.75

1.00

Bookmark

Choose the correct option from the following options that creates a category (3 of the following 5 images):



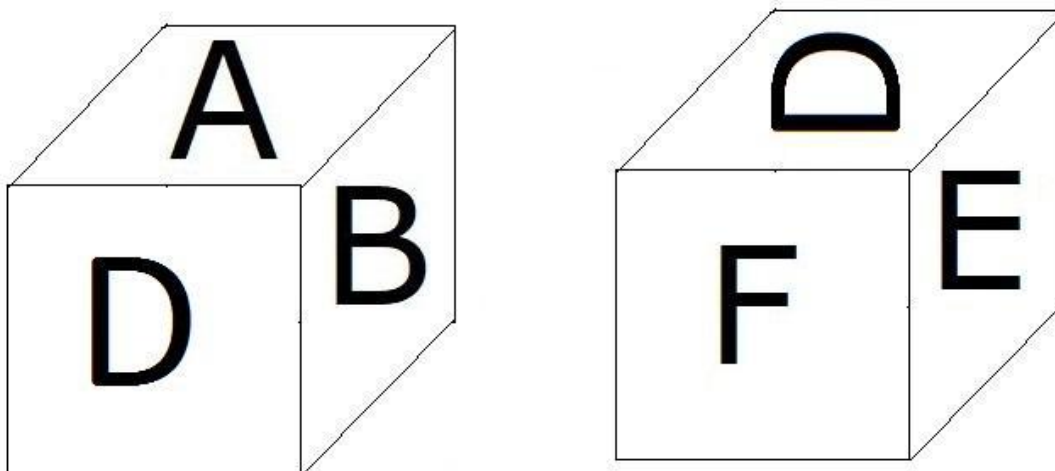
- (A) 1,4,3 - (Optional 4)
- (B) 1,4,5 - (Alternative 2)
- (C) 2,3,4 - (Optional 3)
- (D) 1,2,3 - (Optional 1)

Question No.76

1.00

Bookmark

As shown in the figure, each page of the fash is printed with letters A, B, C, D, E and F. What is printed on the side page of the B character?



- (A) A - (Alternative 4)

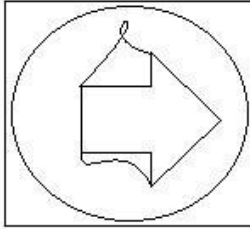
- (B) F - (Optional 1)
- (C) C - (Alternative 3)
- (D) E - (Alternative 2)

Question No.77

1.00

Bookmark

How many lines are there in the given picture?



- (A) 7 - (Optional 2)
- (B) 15 - (Optional 1)
- (C) 11 - (Optional 4)
- (D) 10 - (Optional 3)

Question No.78

1.00

Bookmark

Kajal's grandmother is Vinod's mother's husband, who is Manocha's mother. Vinay is Kajal's father. What is the relationship with humor?

- (A) Kaka - (Alternative 4)
- (B) Brother - (Alternative 1)
- (C) Cousin - (Alternative 3)
- (D) Niece - (Alternative 2)

Question No.79

1.00

Bookmark

Select the appropriate photo for the given question from the following options:

ENTER

- (A) - (Optional 3)

- (B) - (Optional 4)

- (C) - (Optional 2)

- (D)

Question No. 80

1.00

Bookmark

What is the next number in this series?

51, 53, 56, 61, 68, ?

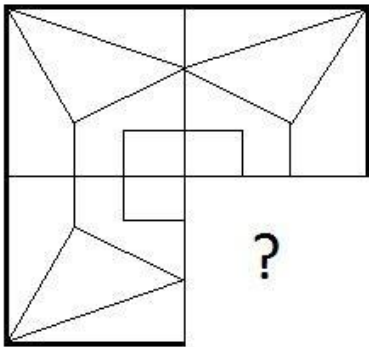
- (A) **79 - (Optional 1)**
- (B) 82 - (Alternative 4)
- (C) 81 - (Alternative 3)
- (D) 80 - (Optional 2)

Question No.81

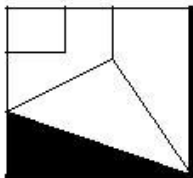
1.00

Bookmark

Select the correct option to complete the image-shaped image of the given image.

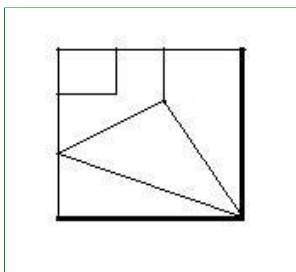


(A)



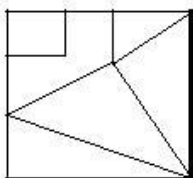
- (Optional 1)

(B)



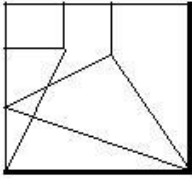
- (Optional 3)

(C)



- (Optional 2)

(D)



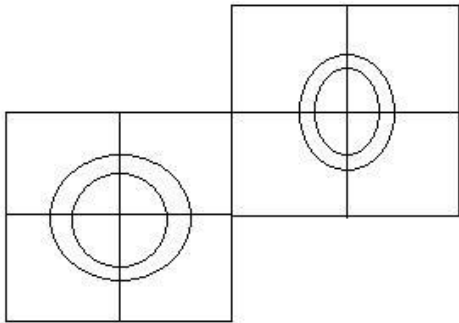
- (Optional 4)

Question No.82

1.00

Bookmark

How many squares are there in the given picture?



- (A) 7 - (Optional 4)
- (B) 10 - (Optional 2)
- (C) 12 - (Optional 1)
- (D) 8 - (Optional 3)

Question no.83

1.00

Bookmark

What is the next number in this series?

10, 15, 30, 35, 70, ?

- (A) 75 - (Alternative 2)
- (B) 73 - (Optional 1)
- (C) 77 - (Optional 3)
- (D) 79 - (Alternative 4)

Question no.84

1.00

Bookmark

Read the following statement and answer the following question.

A + B is A is the husband of B.

AB is A's wife.

A * B is A is the son of B

A / B is A's daughter A.

In the equation $X / Y + Z / W$, what does X's father have to do with W?

- (A) Javai - (Alternative 2)
- (B) Kaka / Mama - (Alternative 1)
- (C) Father-in-law (Alternative 3)
- (D) Boy - (Alternative 4)

Question no.85

1.00

Bookmark

What is the next number in this series?

11, 23, 48, 99, 202,?

- (A) **409 - (Optional 4)**
(B) 309 - (Optional 1)
(C) 350 - (Alternative 2)
(D) 400 - (Alternative 3)

Question no.86

1.00

Bookmark

The support project of a company in England has 619 men and 619 women employees. The average productivity of all employees is 71 calls per day. A male employee consumes an average of 71 calls a day. What is the average number of average calls taken by a female employee in a day?

- (A) 69 - (Alternative 1)
(B) 75 - (Alternative 4)
(C) **71 - (Alternative 2)**
(D) 73 - (Optional 3)

Question No.87

1.00

Bookmark

Martin donates 13% of his salary to the blind welfare institution, 12% to orphanage, 14% to the welfare agency and 16% to the medical aid agency. The rest of his salary is Rs. 40500 accumulates in the bank for its monthly expenditure. What is the amount donated to an orphanage?

- (A) Rs 11,800 - (Optional 2)
(B) Rs 12,800 - (Optional 3)
(C) **Rs 10,800 - (Optional 1)**
(D) Rs 9,800 - (Optional 4)

Question No.88

1.00

Bookmark

Find the value of x.

$$\sqrt{121} \div 11 + \sqrt{144} = 1 \times x$$

- (A) 16 - (Optional 4)
(B) 14 - (Optional 2)
(C) **13 - (Optional 1)**
(D) 15 - (Optional 3)

Question No.89

1.00

Bookmark

The rich divided the 725 gifts into 4 small children. If the share of the first child, the share of the second child, the triple of the third child's contribution and the fourth child's share of the fourth, be the same as the first and second child.

- (A) 518 - (Optional 2)
(B) 516 - (Optional 1)
(C) **522 - (Alternative 4)**

(D) 520 - (Optional 3)

Question No.90

1.00

Bookmark

The station master decided to increase the length and breadth of the rectangular digital board by 9% and 1% respectively. Calculate the total change made in the area.

- (A) 8.91% increase - (Optional 1)
(B) **7.91% increase - (Alternative 2)**
(C) 8.91% reduction - (Optional 3)
(D) 7.91% reduction - (Optional 4)

Question No.91

1.00

Bookmark

234! Find the number of trailing zero (trailing zero) number.

- (A) **56 - (Optional 3)**
(B) 54 - (Alternative 2)
(C) 58 - (Optional 4)
(D) 52 - (Optional 1)

Question No.92

1.00

Bookmark

How many ways do 432 Mobiles have the same number of students?

- (A) **20 - (Optional 2)**
(B) 22 - (Optional 3)
(C) 18 - (Optional 1)
(D) 24 - (Optional 4)

Question No.93

1.00

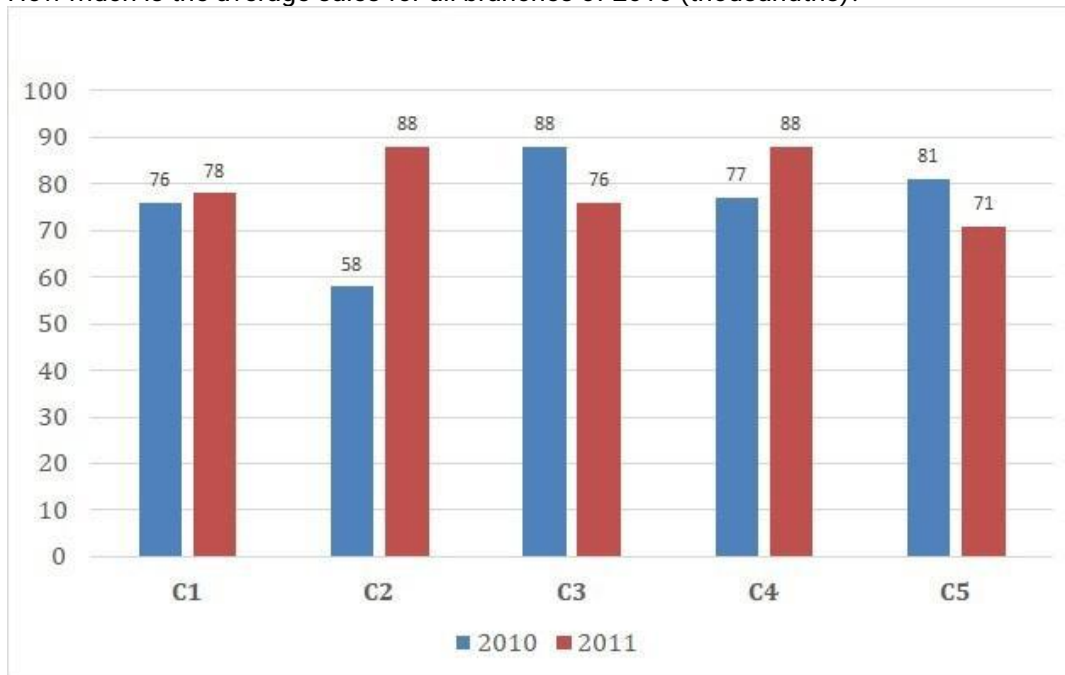
Bookmark

Note:

Study the following columns and answer the following question:

Sales of books in 2010 and 2011 in five branches of one publishing company (thousandths) are shown.

How much is the average sales for all branches of 2010 (thousandths)?



- (A) 80 - (Alternative 4)
(B) 74 - (Optional 1)
(C) 76 - (Alternative 2)
(D) 78 - (Optional 3)

Question No.94

1.00

Bookmark

If the radius of a circle is fourteen times, how much longer is the perimeter of the perimeter?

- (A) 13 - (Optional 1)
(B) 16 - (Optional 4)
(C) 15 - (Optional 3)
(D) 14 - (Optional 2)

Question No.95

1.00

Bookmark

One person is traveling at a speed of 12kmph, 24kmph and 10kmph from a rhombus triangular area. Take the average speed of your entire journey. (In Kmph)

- (A) 14.33 - (Optional 3)
(B) 13.33 - (Optional 2)
(C) 15.33 - (Optional 4)
(D) 12.33 - (Optional 1)

Question No.96

1.00

Bookmark

Sheila runs a certain distance $15/16$ times faster than usual speed and takes longer than 6 minutes. Find the time you always need. (In minutes)

- (A) 84 - (Alternative 4)
(B) 86 - (Optional 3)
(C) 88 - (Alternative 1)
(D) 90 - (Optional 2)

Question No.97

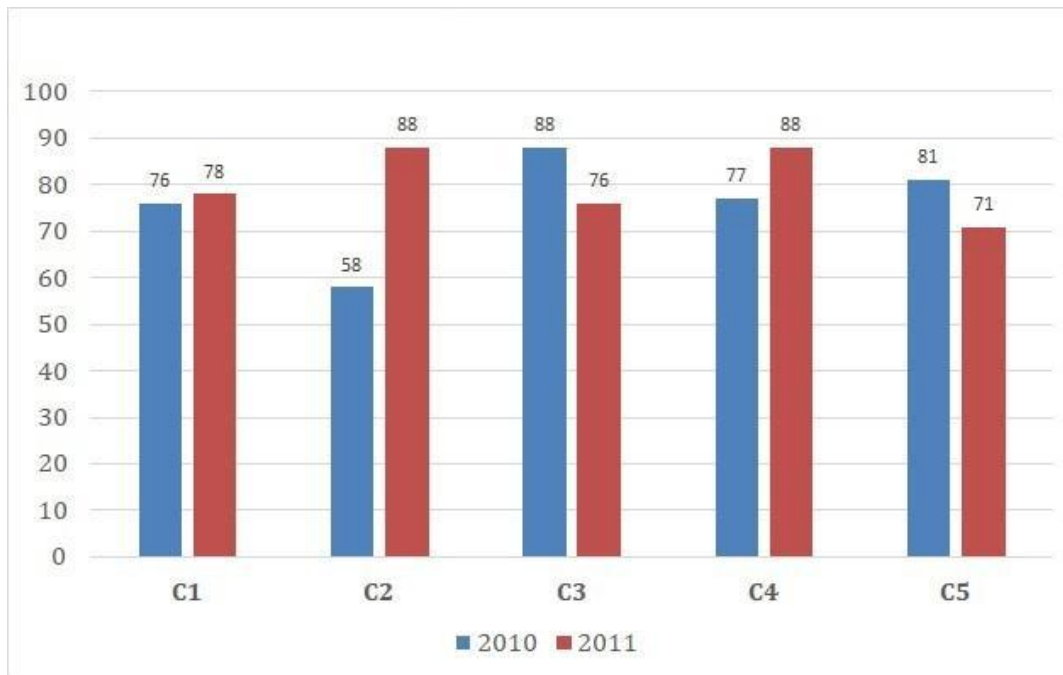
1.00

Bookmark

Note:

Study the following columns and answer the following question:

Sales of books in 2010 and 2011 in five branches of one publishing company (thousandths) are shown. What is the total sale of C1, C3 and C5 branches for both the years together? (Thousandths)



- (A) 470 - (Alternative 3)
- (B) 460 - (Alternative 2)
- (C) 450 - (Optional 1)
- (D) 480 - (Alternative 4)

Question No.98

1.00

Bookmark

One bulb manufacturer found that 13% of the total product is defective. If the number of defective products is 4524, find the number of defective products.

- (A) 686 - (Optional 4)
- (B) 676 - (Optional 3)
- (C) 656 - (Optional 1)
- (D) 696 - (Alternative 2)

Question No.99

1.00

Bookmark

In one box, 3 types of old coins are kept in the ratio 3: 5: 7. Coins are worth 1 rupee, 5 rupees and 10 rupees respectively. If the total value of coins placed in the box is Rs. If you have 1372, find out the number of coins worth 10 rupees.

- (A) 92 - (Optional 4)
- (B) 96 - (Optional 1)
- (C) 94 - (Optional 3)
- (D) 98 - (Alternative 2)

Question No.100

1.00

Bookmark

Find the multiplication of two such numbers 9797 and M.Sc. There is 1.

- (A) 9797 - (Optional 1)
- (B) 9898 - (Optional 4)
- (C) 9696 - (Optional 3)
- (D) 9595 - (Alternative 2)

Question No.101

1.00

Bookmark

After remaining divided by 119, there are 16 remaining. How much remaining 17 divided by the same number?

- (A) 13 - (Optional 1)
- (B) 16 - (Optional 4)
- (C) 14 - (Optional 2)
- (D) 15 - (Optional 3)

Question No.102

1.00

Bookmark

The average weight of 61 sticks in a box is 6.1 kg. On keeping that new one, the weight of the weight increased to 6.2. Then weigh the weight of new weight. (In kg)

- (A) 12.3 - (Optional 1)
- (B) 12.9 - (Optional 4)
- (C) 12.5 - (Optional 2)
- (D) 12.7 - (Optional 3)

Question No.103

1.00

Bookmark

A shopkeeper increased the price of one item by 41% and then gave 41% discount on the printed price as a discount. What is the total profit or loss percentage?

- (A) 16.21% loss - (Optional 4)
- (B) 16.81% profit - (Optional 1)
- (C) 16.81% Damage - (Alternative 3)
- (D) 16.21% profit - (Optional 2)

Question No.104

1.00

Bookmark

If the same amount is invested for two years at the same rate of compounding and straightforward interest, then there will be difference of Rs. 56 to the interest paid. If the interest rate is 4% per annum then withdraw the amount invested. (In rupees)

- (A) 34,000 - (Optional 2)
- (B) 33,000 - (Optional 3)
- (C) 35,000 - (Optional 1)
- (D) 32,000 - (Optional 4)

Question No.105

1.00

Bookmark

The damage done for a sale of Rs 535 for one item is 60% of the profit after selling the same item for Rs 775. Find the base price of the item. (In rupees)

- (A) 625 - (Optional 1)
- (B) 615 - (Alternative 2)
-

- (C) 610 - (Optional 3)
(D) 600 - (Alternative 4)

Question No.106

1.00

Bookmark

The milk and water content of the 49-liter mixture is 3: 4. How much water is required to mix this ratio 3: 5? (In liters)

- (A) 7 - (Optional 1)
(B) 6 - (Optional 2)
(C) 5 - (Optional 3)
(D) 4 - (Optional 4)

Question No.107

1.00

Bookmark

Give it straightforward:

$$12.34 + 23.45 + 34.56 - 45.67 = 2 \times ?$$

- (A) 13.34 - (Optional 2)
(B) 14.34 - (Optional 4)
(C) 12.34 - (Optional 3)
(D) 11.34 - (Optional 1)

Question No.108

1.00

Bookmark

A train crosses 238 m length in 51 seconds. If the same train has 17 seconds to cross a sign board, find the length of the train. (In meters)

- (A) 119 - (Optional 3)
(B) 117 - (Optional 1)
(C) 120 - (Optional 4)
(D) 118 - (Alternative 2)

Question No.109

1.00

Bookmark

The ratio of salary to Hameed, Seliment and Ganesh is 3: 5: 7. If Ganesh is worth more than Hameed If you get 852 more, how much salary is salary? (In rupees)

- (A) 1,065 - (Optional 4)
(B) 1,035 - (Optional 1)
(C) 1,055 - (Optional 3)
(D) 1,045 - (Optional 2)

Question No.110

1.00

Bookmark

An amount of 6600 rupees is invested in 8% yearly interest rate. After 5 years, withdraw the total amount and invest half a share in the stock market. Then remove the remaining amount. (In rupees)

- (A) 4,520 - (Optional 3)
(B) 4,620 - (Optional 4)
(C) 4,320 - (Alternative 1)

(D) 4,420 - (Optional 2)

Question No.111

1.00

Bookmark

A shopkeeper earns 12.5% profit by selling an item at a price of Rs 2,763. Calculate half the price of the original cost of that item. (In rupees)

- (A) 1,229 - (Optional 4)
(B) 1,228 - (Optional 3)
(C) 1,226 - (Optional 1)
(D) 1,227 - (Optional 2)

Question no.112

1.00

Bookmark

Find the value of x.

$$\frac{2}{5}(x) + \frac{3}{10}(x) - \frac{3}{5}(x) = 439$$

- (A) 4390 - (Alternative 2)
(B) 4590 - (Alternative 4)
(C) 4290 - (Optional 1)
(D) 4490 - (Optional 3)

Question no.113

1.00

Bookmark

A man cycling goes from hostel to college at 15 km faster and gets late by 2 minutes. He runs the bicycle at 20 km faster, it will arrive 2 minutes early. Distance between hostel and college distance. (In KM)

- (A) 4 - (Optional 4)
(B) 3 - (Optional 3)
(C) 2 - (Optional 2)
(D) 1 - (Optional 1)

Question no.114

1.00

Bookmark

The total area of a square piece of a square placed on a table is 1089 cm^2 . The width between the glass piece and the edge of the table is 9 cm. Remove the length of the table. (in cm)

- (A) 51 - (Optional 3)
(B) 53 - (Alternative 4)
(C) 52 - (Alternative 2)
(D) 50 - (Optional 1)

Question No.115

1.00

Bookmark

A cuboid of Karna $21\sqrt{3}$ melts and creates a cuboid. The length of the cuboid is the same as the density, the width of the cuboid is 10.5 cm, what is the height of the cuboid? (in cm)

- (A) 42 - (Optional 1)
(B) 45 - (Optional 4)
(C) 44 - (Optional 3)
(D) 43 - (Alternative 2)

Question no.116

1.00

Bookmark

One sum is tripled on compound interest in 4 years. How long will it take for 9 times?

- (A) 10 - (Optional 4)
(B) 9 - (Optional 3)
(C) 7 - (Optional 1)
(D) 8 - (Optional 2)

Question No.117

1.00

Bookmark

Vimala has 44 of the 80 languages in French, 86 out of 100 in English, 46 out of 70 in Japanese and 34 in the Japanese. Remove the total percentage of his points. (In%)

- (A) 60 - (Optional 2)
(B) 50 - (Optional 1)
(C) 80 - (Alternative 4)
(D) 70 - (Alternative 3)

Question No.118

1.00

Bookmark

Give it straightforward:

$$169^2 \times 52 \div 13^5 \times 1020 = ?$$

- (A) 4050 - (Optional 1)
(B) 4060 - (Alternative 2)
(C) 4070 - (Optional 3)
(D) 4080 - (Optional 4)

Question No.119

1.00

Bookmark

There are 10 bangles in a gift box, the first four bangles have an average weight of 47 grams and the remaining 6 bangles have an average weight of 48 grams. Remove the average weight of the total bangles. (In grams)

- (A) 47.6 - (Optional 3)
(B) 45.6 - (Optional 1)
(C) 46.6 - (Optional 2)
(D) 48.6 - (Optional 4)

Question No.120

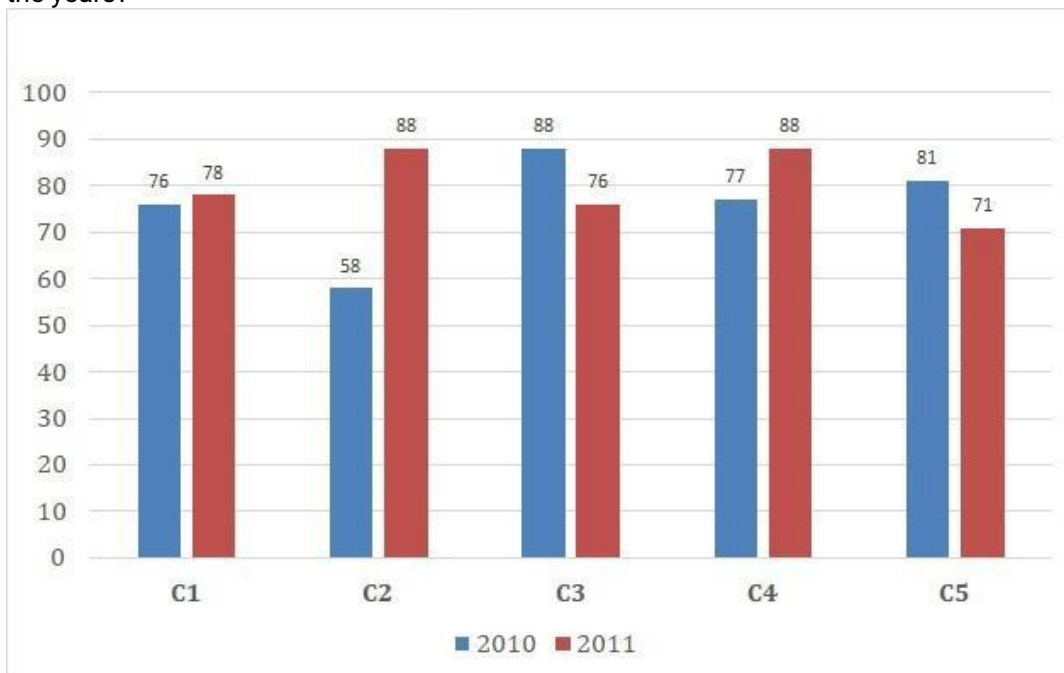
1.00

Bookmark

Note:

Study the following columns and answer the following question:

Sales of books in 2010 and 2011 in five branches of one publishing company (thousandths) are shown. What is the ratio of total sales for both years of C2 branch, for the total number of C4 branches for both the years?



- (A) 141: 165 - (Optional 1)
- (B) **146: 165 - (Optional 4)**
- (C) 145: 165 - (Optional 3)
- (D) 143: 165 - (Optional 2)